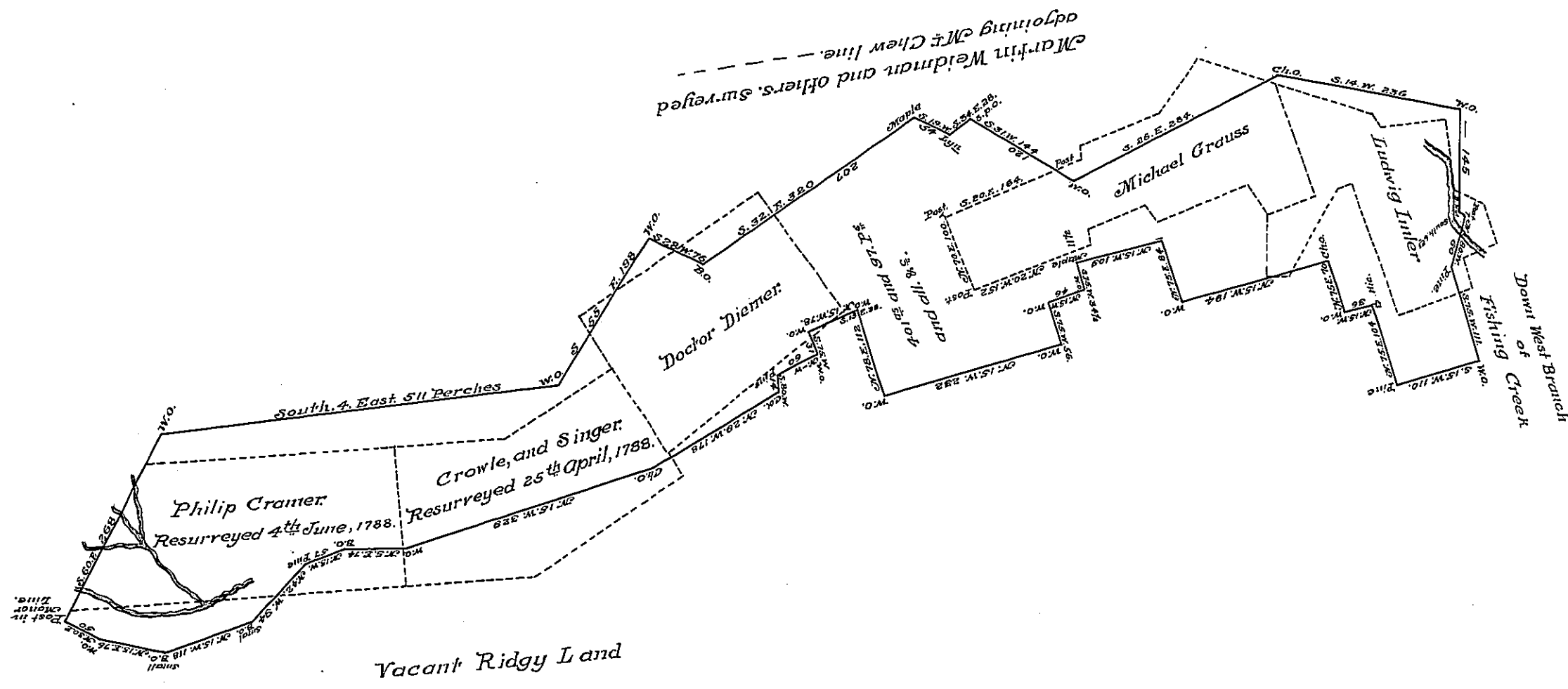


*Encorsement on Back*  
*Northumberland*  
*Resurveyed*  
*for*  
*Benjamin Chew Esq.*  
*of 2254 Acres*  
*on the*  
*West Branch*  
*of*  
*Fishing Creek*  
*529:7 No. 3731.*

*Ret'd 29<sup>th</sup> October 1799 to said*  
*Benny Chew on Watt. to accept, dated*  
*18<sup>th</sup> Inst.*



*In pursuance of your order of Resurvey, I have made the annexed Survey, and draught, agreeably to the old lines Mr. Chew Survey is included within the Black lines, - the other different claims, within the dotted lines - Those scraps left outside of dotted lines and within the Black are generally poor, and of very little value, but considered independent, of the other part of the survey, are really of no use. That part lying between Grauss, and Diemer; Containing Four hundred and one acres, 97 Perches, and allowance 2/3 is pretty valuable but erant for that Mr. Keeble has a warrant for 300<sup>00</sup> which calls for that Ground but it remains yet unsurveyed as he has furnished me with no official order from you for that purpose - This Resurvey was made the 15<sup>th</sup> day of November 1791.*

*By W<sup>m</sup> Montgomery D.S.*

*To Daniel Broadhead Esq*  
*Surreyor General.*

*In testimony that the above is a true copy of the original on file in the surreyor Generals office having been copied conformably to the 3<sup>d</sup> section of an act of assembly passed the 16<sup>th</sup> day of February, 1833. - I have hereto set my hand and the seal of said office at Harrisburg the 17<sup>th</sup> day of November 1856.*



*To, J. Porter Brawley S. G.*  
*Tho. J. Rehret:*

*In Testimony, That the above is a copy of the original remaining on file in the Department of Internal Affairs of Pennsylvania, made conformably to an act of Assembly approved the 16<sup>th</sup> day of February 1833, I have hereunto set my Hand and caused the Seal of said Department to be affixed at Harrisburg the first day of September 1910.*

*Henry H. Hall*  
*Secretary of Internal Affairs.*